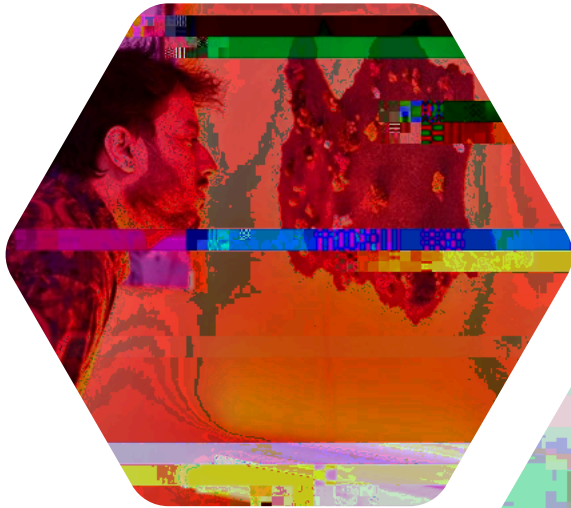


Tc a cffck'g Hc a Y kUg Ub]a a Yfg]jY
YI \]V]h]cb \c igYX Uh h\Y MigYi a cZ h\Y
Hc a Y]b Hc lhcb VYhkYYb Nc jYa VYf
202% UbX >UbiUfm 2022" 8fUk]b[idcb
'YUX]b[fYgYUfW\ Zfc a h\Y I 7L lbgh]hihY



TOMORROW'S HOME EXHIBITION

The exhibition focused on three main topics which already affect our way of living, but will increasingly come to the fore over the next 30 years:

The exhibition focused on three main topics which already affect our way of living, but will increasingly come to the fore over the next 30 years:

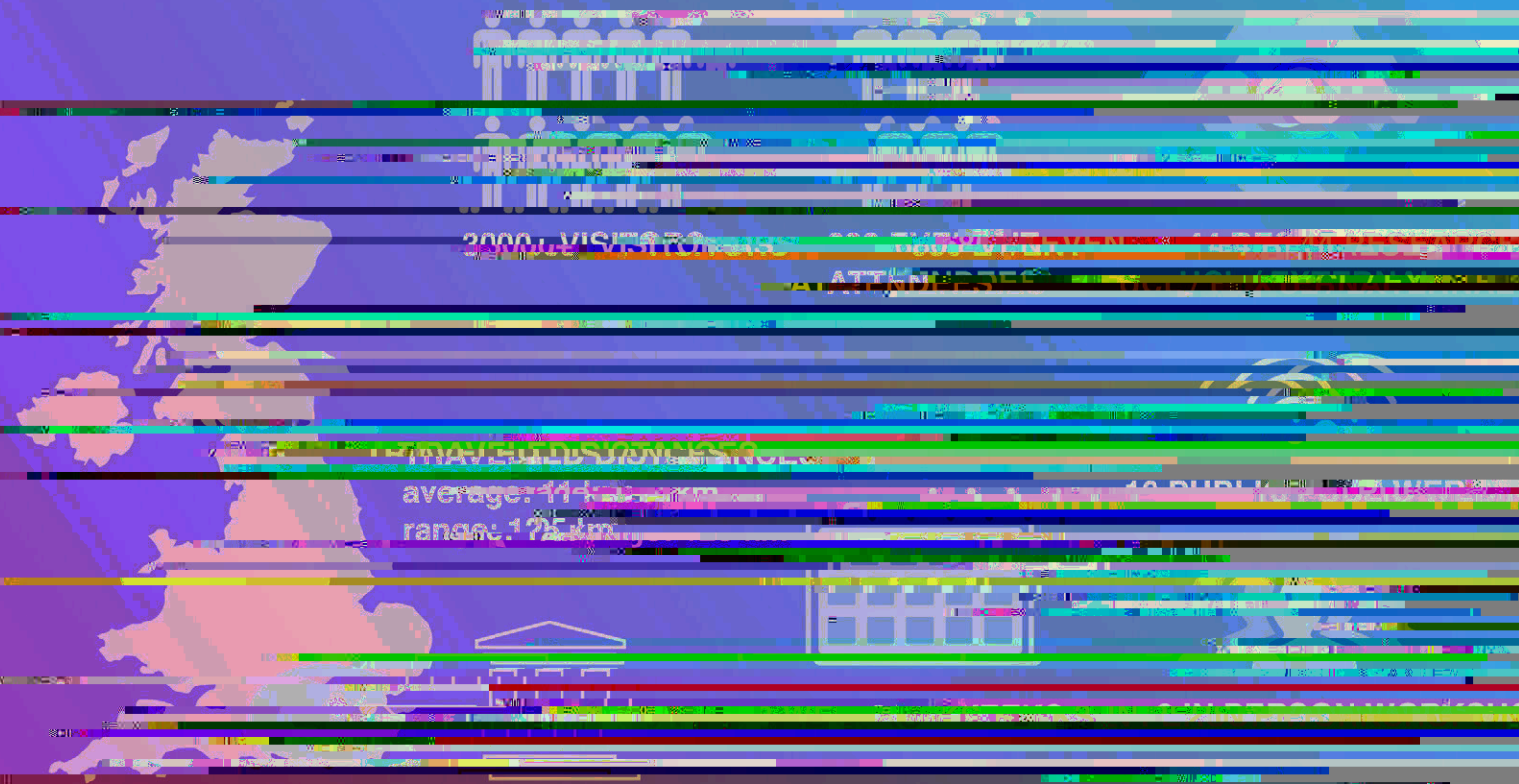
- Climate change
- An ageing population
- Digital automation

These themes were explored through a collection of storytelling and imaginary household objects and services, from smart-sensor cups that can detect your medication levels, to an AI platform that allows you to interact with deceased loved ones. These interactive items were designed to provoke visitors to reflect on their personal boundaries when it comes to technology.

We encountered these objects as we followed the daily routines of three different inhabitants living in a multigenerational co-habitation:

- Kai, 17, who works for a 3D printing company and has never tasted meat
- Mo, 76, a retired teacher with dementia
- Charlie, 34, with cerebral palsy, who works for a protein manufacturer in Buenos Aires

TOMORROW'S HOME EXHIBITION AT A GLANCE



MUSEUM OF THE FUTURE
Hackney, London

GENDER PROPORTION



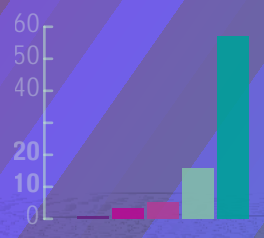
30% OF VISITORS REPORTED A DISABILITY



ETHNICITY PROPORTION

60% OF VISITORS REPORTED A DISABILITY





- Very strong positive response
- Strong positive response
- Neutral response
- Strong negative response
- Very strong negative response

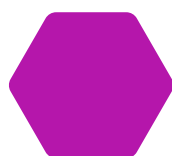
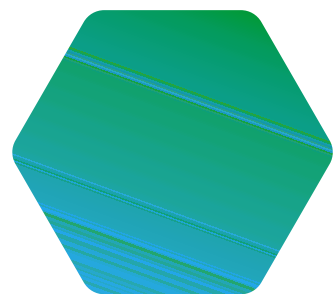


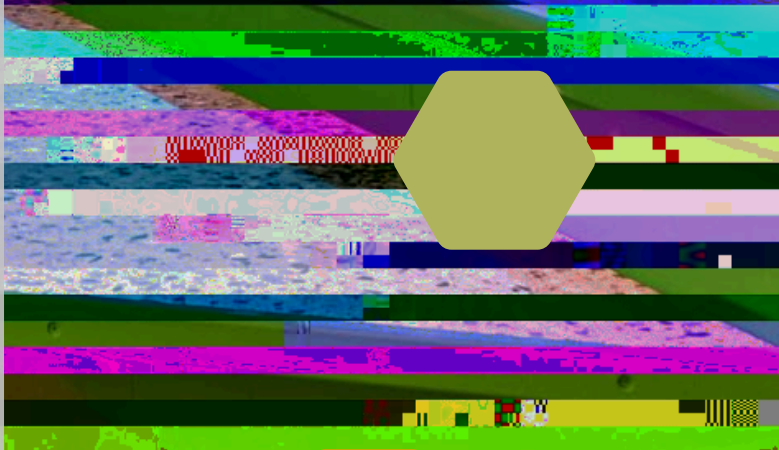
'What was missing? What innovations and engineering could exist to support you in the future at home?'

! "\$%&"#\$' #' (' &%) *"+%,)-' +. "/0"1/2/#3+24"
+%2 * 302%2"5' 2"\$35"6/0#%+78*%+230' -"
+%- '#/302\$/ * 2" (3)-9": %"0)+#)+%9"/0"#%\$%"
;)#)+%<"%2*%(/' --. "/;"5%4+%", 3/0, "#3"2*%09"
&3+%'" 09"&3+%#/#&%"' #"\$3&%=

>\$%+"5%+"1/2/#3+2"5\$3"53)-9"\$' 1%"' -23"
-/?%9"#3"2%%"&3+%"/0031' #/30"/9%' 2"' +3)09"
#%\$%)2%"3;"0' #)+%"' 09"0' #)+' -"&' #%/+' -2=

POLITICAL
& SOCIAL
DYNAMICS
6%







Tomorrow's Home 2050 was made possible by financial support from:
The Royal Academy of Engineering, UCL Grand Challenges, and the UCL
Weiss Centre. The Museum of the Home provided valuable support in kind.

A
Exhibition design: The Liminal Space
Exhibition and event photography: Mike Massaro
Data visualisation and report design: Janneke van Leeuwen

Special thanks to the participating engineers, the project team, visitors,
and everyone else who contributed to the success of this interdisciplinary
project.



Website: www.rae.ac.uk/hea-hca-e-e-g-ee-g

 hea-hca-e-e-g@rae.ac.uk

 [@hea_h_e_g](https://twitter.com/hea_h_e_g)